



# A BRIEF STORY ABOUT THE CANCER FUND EXPERIENCE

---

*Carlos Eduardo de Oliveira Lula*

*Secretary of State for Health – Maranhão - Brazil*



SECRETARIA DA  
SAÚDE

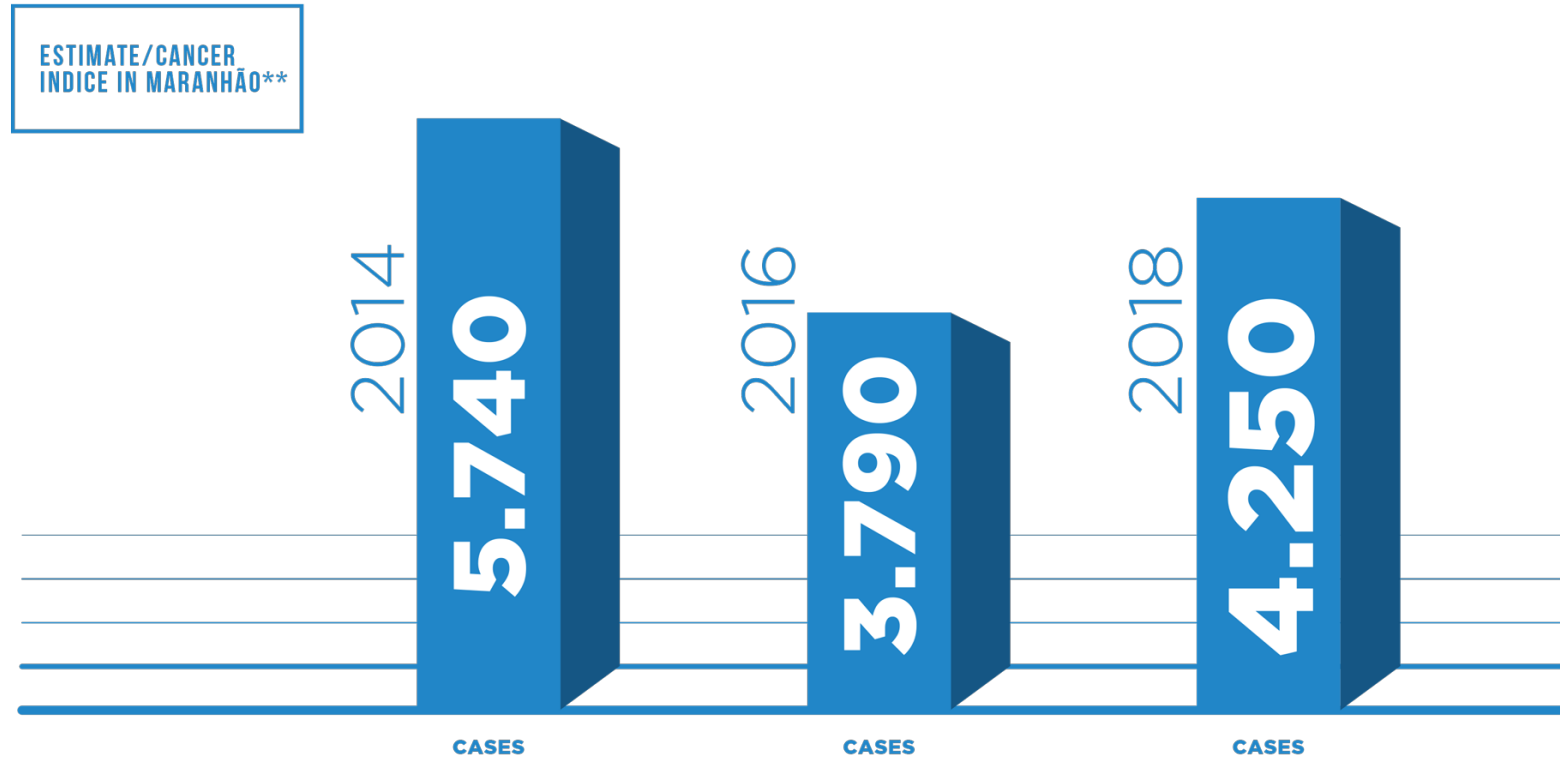
# The State of Maranhão



- Population: 6,954,036
- Area: 331,983,450 square kilometres



# The Challenge

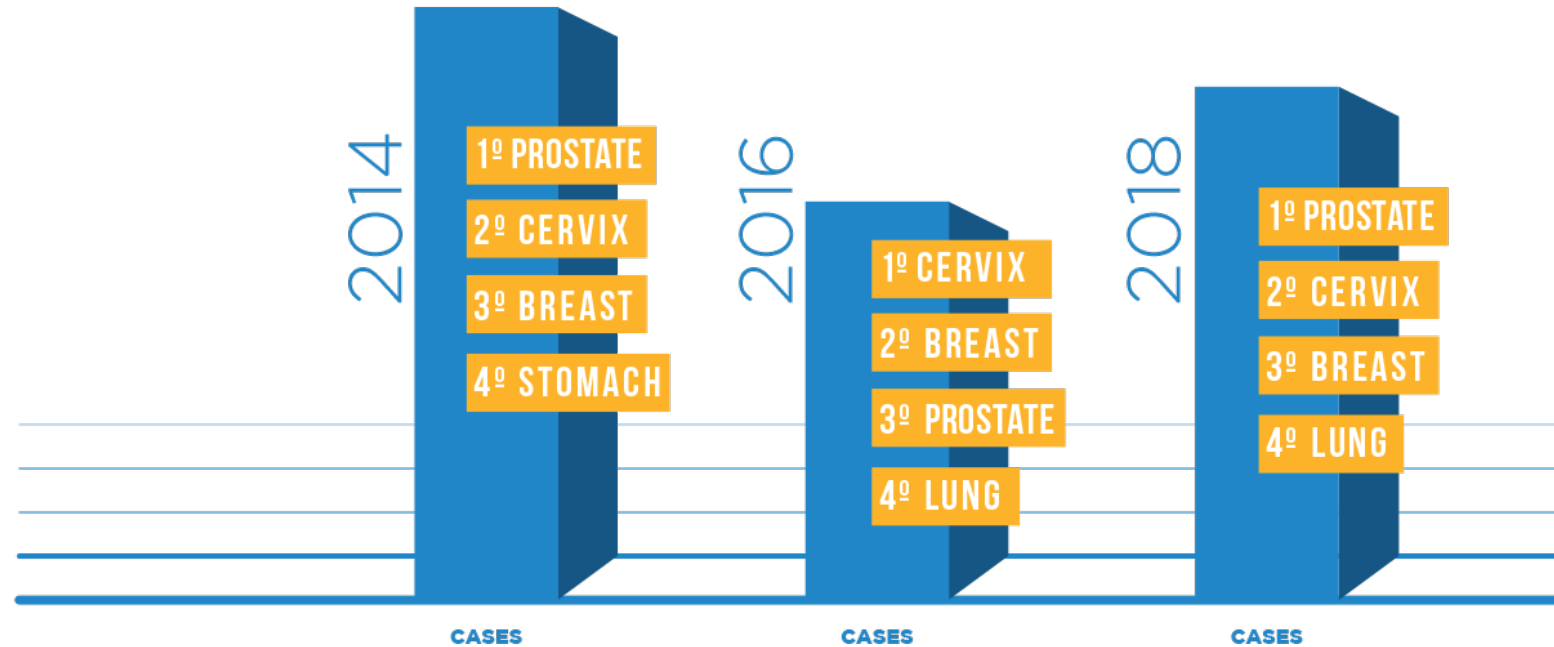


\*\*THE BRAZILIAN NATIONAL CANCER INSTITUTE (INCA)



# The Challenge

HIGHER INCIDENCES\*\*



\*\*THE BRAZILIAN NATIONAL CANCER INSTITUTE (INCA)

# The Challenge

- In Maranhão, breast and cervix cancers are the most common between women and have the highest death percentage
- Prostate and stomach cancers affect most men
- Most cancers can be early diagnosed - lung and stomach are exception



# The Beginning

## *How the Fund to Fight Cancer started?*

- A conversation with a Local Congressman about the coverage of cancer treatment in Maranhão
- The development of a viable project for creation of a state fund to fight cancer

# The obstacle

## *What we had to face*

- It was necessary to create an alternative legislative process to create the fund due to constitutional issues
- An amendment to the state constitution was passed in which the part of the state tax revenue (ICMS) on alcohol and tobacco was linked to the fund financing



# Sources of Financing

SECRETARIA DA  
SAÚDE

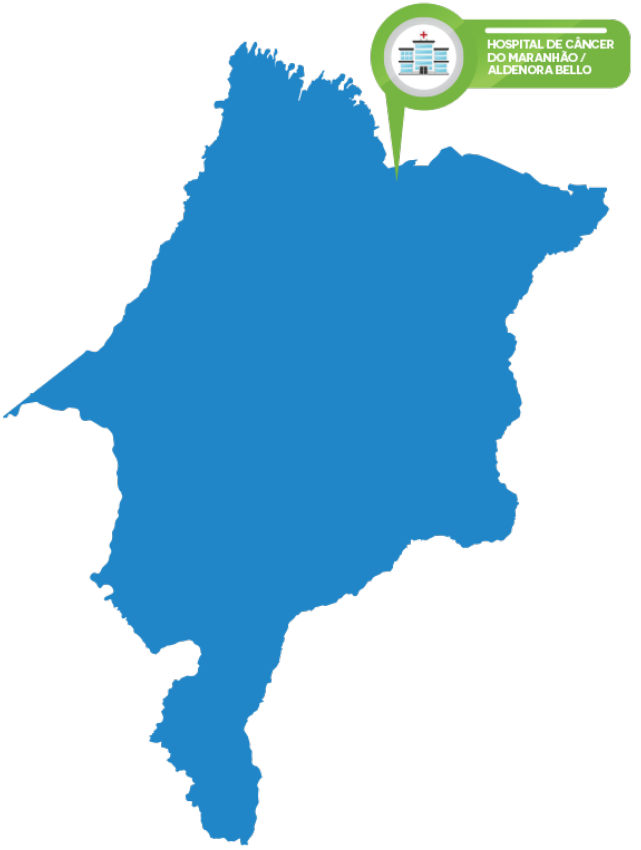


- I. 3% of the gross revenue generated from tax on operations related to the interstate and intermunicipality transportation of goods, services and communication (Tax on Goods and Services – ICMS, a state tax) related to cigarettes, cigars, other tobacco products and alcoholic beverages.
- II. 1% of the gross revenue of the tax on operations related to the interstate and intermunicipality transportation of goods, services and communication (Tax on Goods and Services – ICMS, a state tax) related to alcoholic beverages.
- III. In addition, the Fund can receive financial resources from entities of the municipal, state, federal level and foreign public entities; from other budgetary allocation of the State Government; donations, transfers, grants, contributions or any other transfer of natural or legal persons under public or private law of the country or abroad.

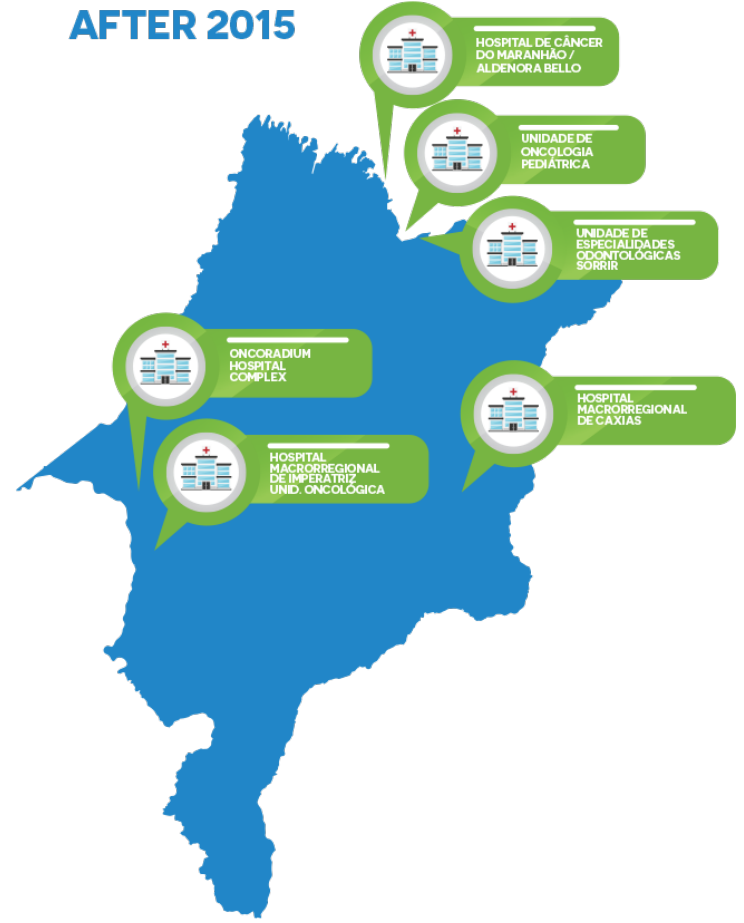


# Achivements

## BEFORE 2015



## AFTER 2015



# The Perspective

- The Fund to Fight Cancer will ensure resources for expansion of services and strengthen actions for prevention, treatment and diagnosis
- Maranhão increased from 442 million brazilian reais in health investments to 2 billion brazilian reais in the last 12 years
- Creative solutions must inspire new sources for health systems financing





SECRETARIA DA  
SAÚDE

